

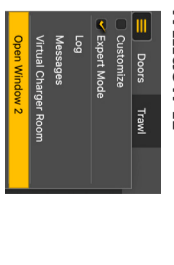







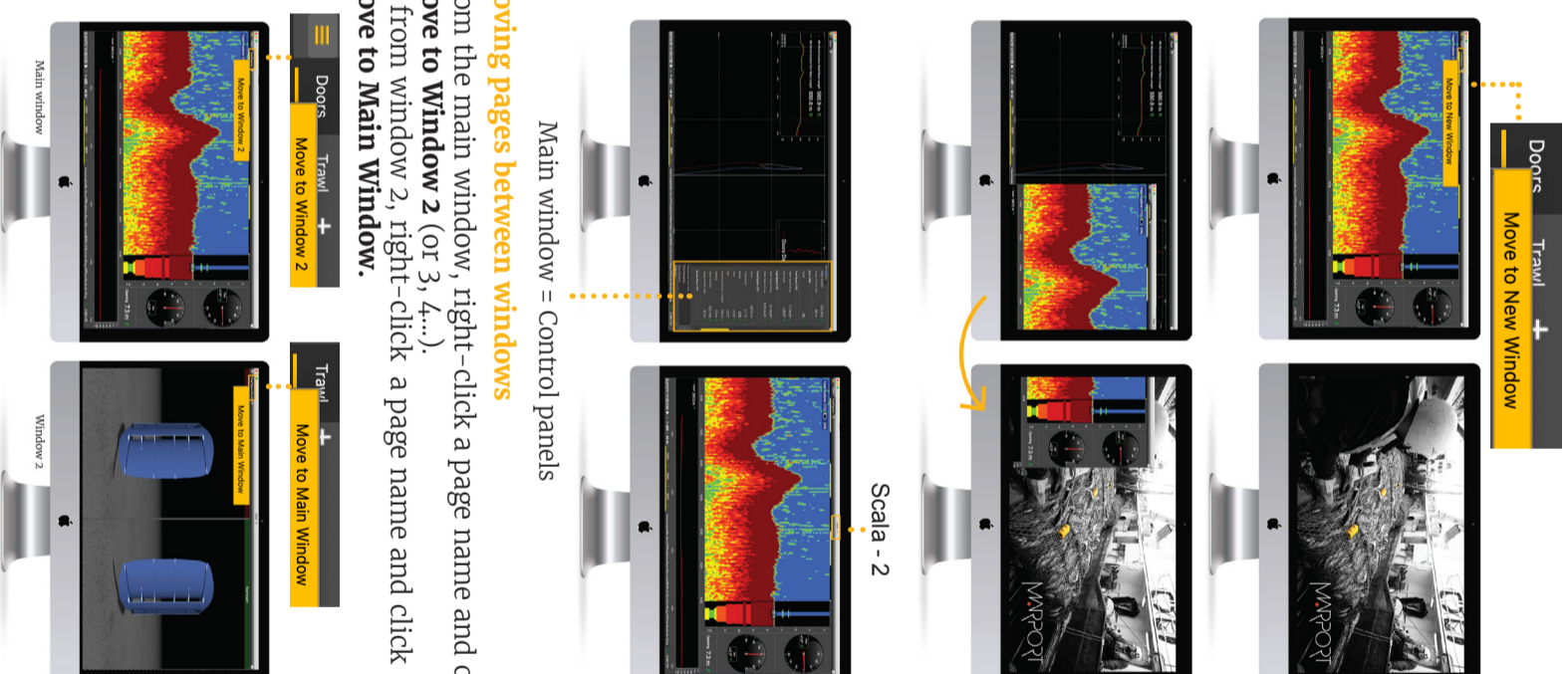
## Troubleshooting

Problem	Possible causes	Solution
Sensor data are not displayed, LEDs are red or orange.	You may have closed the virtual machine that analyzes receiver data when you started Scala2 or when you plugged in a device.	<ol style="list-style-type: none"> <li>1. Check if this icon  is in the Dock. If not, restart the system.</li> <li>2. A virtual machine starts automatically when starting the computer and is necessary for Scala2 functioning. The virtual machine window can appear when starting Scala2. Do not close it.</li> </ol> <p>Click <b>Menu</b>  &gt; <b>Open Window X</b></p> 
I cannot find a window.	You may have closed the window.	<ol style="list-style-type: none"> <li>1. Check the other windows to see if the page appears in it. If you created a window and cannot find it, see the previous troubleshooting case.</li> <li>2. If the page is in another window, right-click the page name and select <b>Move to Main Window</b> to move it to the window with the control panels, or <b>Move to Window X</b> to move it to another window.</li> </ol> <p>If the page was hidden, click the plus icon on the toolbar to find it.</p> 
I cannot see pages that were displayed before on the top toolbar.	You may have moved these pages to a new window.	<p>You may have hidden this page (Customize mode only)</p> <p>If the page was hidden, click the plus icon on the toolbar to find it.</p> 
A VMware Fusion message appears when adding a new USB key.	This message is due to the virtual machine. It appears when adding external an USB device.	<ol style="list-style-type: none"> <li>1. Select <b>Remember my choice and do not ask again.</b></li> <li>2. Click <b>Connect to Mac.</b></li> </ol> 
I cannot connect to the internet.	Internet network might be too far in the network list.	<ol style="list-style-type: none"> <li>1. From the top left corner of the screen click Apple Menu  &gt; <b>System Preferences</b> &gt; <b>Network.</b></li> <li>2. From the bottom of the network list, click the wheel icon and select <b>Set Service Order.</b></li> </ol>  <ol style="list-style-type: none"> <li>3. Drag the network you use to have internet on top of the list. It can be for example your phone WiFi, your router WiFi, a USB to Ethernet adapter...</li> </ol>

## Windows

### Opening a page in a new window

Click **Menu**  > **Customize** and enter the password eureka. Right-click the page name, click **Move to New Window** and drag the new window to another screen.



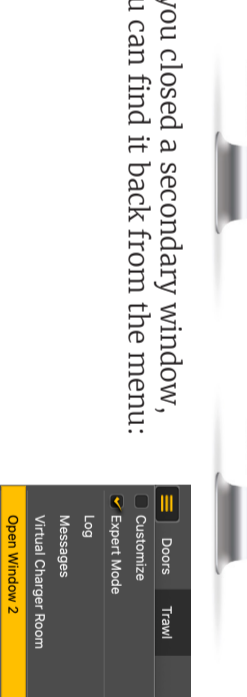
Main window = Control panels

### Moving pages between windows

From the main window, right-click a page name and click **Move to Window 2** (or 3, 4...).

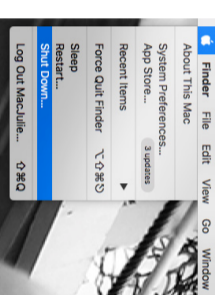
Or from window 2, right-click a page name and click **Move to Main Window.**

If you closed a secondary window, you can find it back from the menu:



## Mac Basics

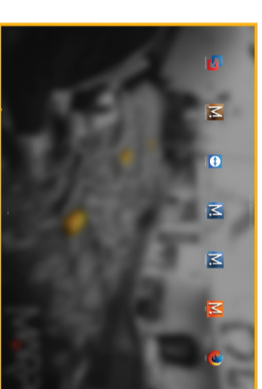
### Switching on:



### Switching off:

Opening applications and files via the Dock:

Launchpad: access all your applications

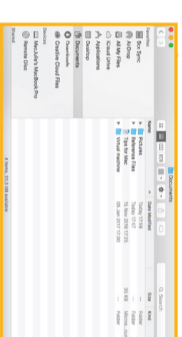


Web



TeamViewer

Trash: to delete item, drag it to the trash




Finder: access your files

### Starting Scala2

Scala2 software dongle must always be plugged in the computer.

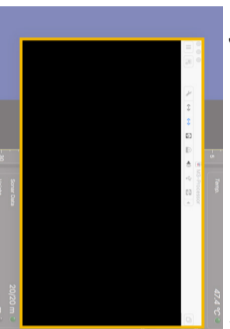
From the Dock at the bottom of the screen, click Scala2 icon.



▲ The following window is a software that analyzes sensors data. This program is necessary for the functioning of the receiver. **DO NOT CLOSE** this window. If it appears, click minimize  to hide it. This icon should always appear at the bottom of your desktop screen:

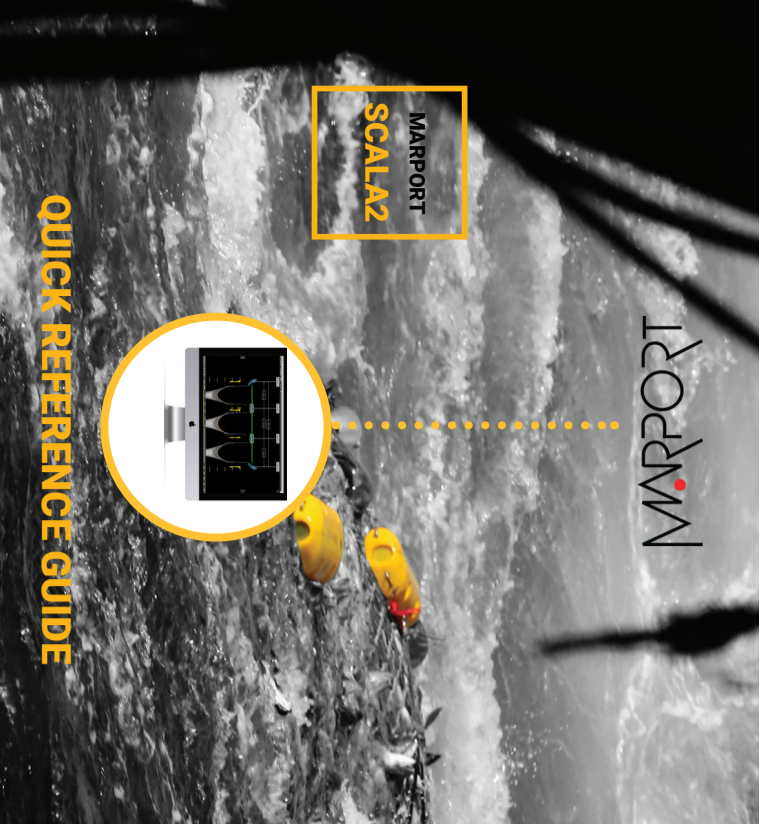


If you close the window, restart the system.



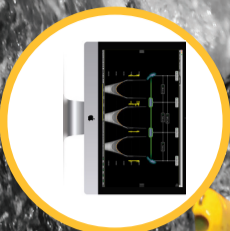
## Offices

- Iceland**  
Marport EHF  
Fosslaleyni 16  
112 Reykjavik, Iceland  
supporticeland@marport.com
- France**  
Marport France SAS  
8, rue Maurice Le Léon  
56100 Lorient, France  
supportfrance@marport.com
- Norway**  
Marport Norge A/S  
Brevika Industrivél 69,  
6018 Ålesund, Norway  
supportnor@marport.com
- USA**  
Marport Americas Inc. USA  
12123 Harbour Reach Drive  
Mukilteo, WA 98275 USA  
supportusa@marport.com
- United Kingdom**  
Marport UK Ltd  
32 Wilson Street  
Peterhead, AB42 1UD, United Kingdom  
gyoungson@marport.com
- Spain**  
Marport Spain SRL  
Camino Chouzo 1  
Camiño Viego (Pontevedra), Spain  
8620826296  
supportspain@marport.com
- South Africa**  
Marport South Africa  
Cape Town, Western Cape,  
11 Paarnden Eiland Road,  
Paarden Eiland, 7405  
csanter@marport.com



MARPORT  
SCALAZ

## QUICK REFERENCE GUIDE



Scala2 collects, processes, stores and displays data sent from multiple sensors, sounders and other connected devices.

Scala2 is the evolution of Scala. It supports Marport's new Pro range of sensors, the Door Explorer and Trident, as well as Dock charger. You can benefit from several enhancements:

- A new multitrawl view of single, twin, triple and quad trawls with doors and clump alignment, warp length and echogram display.
- Add event markers in live time, then find them back when replaying data on ScalaReplay2
- Use drag and drop possibilities to customize your page layout.
- Choose from existing gauges, history plots or 3D views or create your own layout with any number of sensors displayable on screen.
- Compare data from equivalent sensors using multiple history plots.

! This guide is an introduction to Scala2. If you want to learn more about configuration and advanced customization of display, see Scala2 User Guide.

© 2022 Marport. All Rights reserved.  
No part of this document may be reproduced, stored in a retrieval system or transmitted in any form by any means; electronic, mechanical, photocopying or otherwise, without the express written permission from Marport. "Marport", the Marport logo and Software Defined Sonar are registered trademarks of Marport. All other brands, products and company names mentioned are the trademark and property of its respective owners only. Marport is a division of Airmar Technology Corporation.

Data received from sensors are displayed on pages. Pages are organized in tabs on the top toolbar.



Click one tab to display the corresponding page.

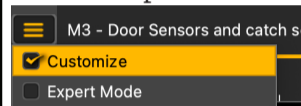
On the top of the echogram, you can see:

- Name of the sensor, followed by a number corresponding to its location on the trawl (see Scala2 user guide for more details).
- Battery level of the sensor
- Target Strength for V3 Explorer sensors (helps you differentiate species and sizes of fish).

HDTE [9] 60% -36.0 dB

To edit pages, first click the menu, then **Customize**.

Enter the password **eureka**.

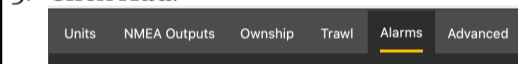


When you have finished customizing pages, you need to deactivate the Customize mode: click **Menu** > **Customize** again.

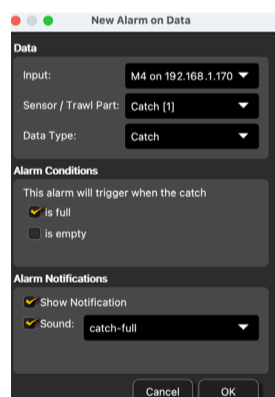
### Setting an Alarm

You can be alerted by an alarm when data received have a given value.

1. Click **Menu** > **Settings**
2. Select the tab **Alarms**.
3. Click **Add**.

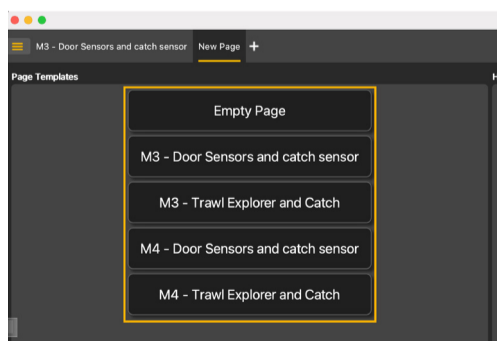


4. **Data:** choose on which equipment and type of data the alarm is set.
5. **Alarm Conditions:** choose the conditions on which the alarm is triggered.
6. **Alarm Notifications:** choose if you want to display a pop-up notification and/or a sound.
7. For example, with these parameters you are alerted when the catch is full:

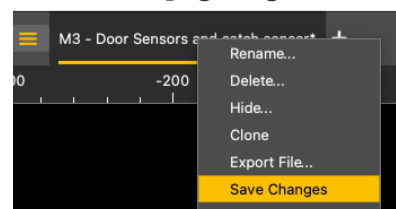


### Creating and saving a page

1. To create a new page, click **+** in the top toolbar.
2. Choose among templates or start from scratch with an empty page.

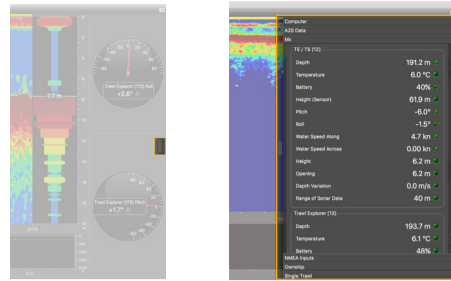


3. To save the page, right-click the page tab and click **Save Changes**.

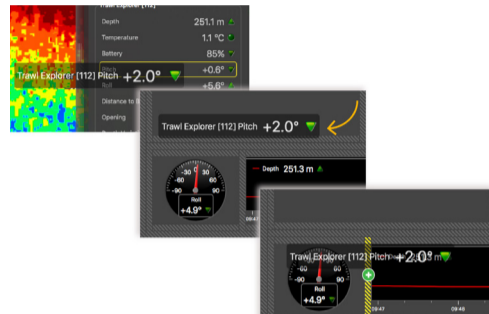


### Adding data to a page

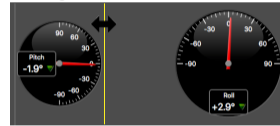
1. Click the small rectangle at the right side of the screen to display the control panels.



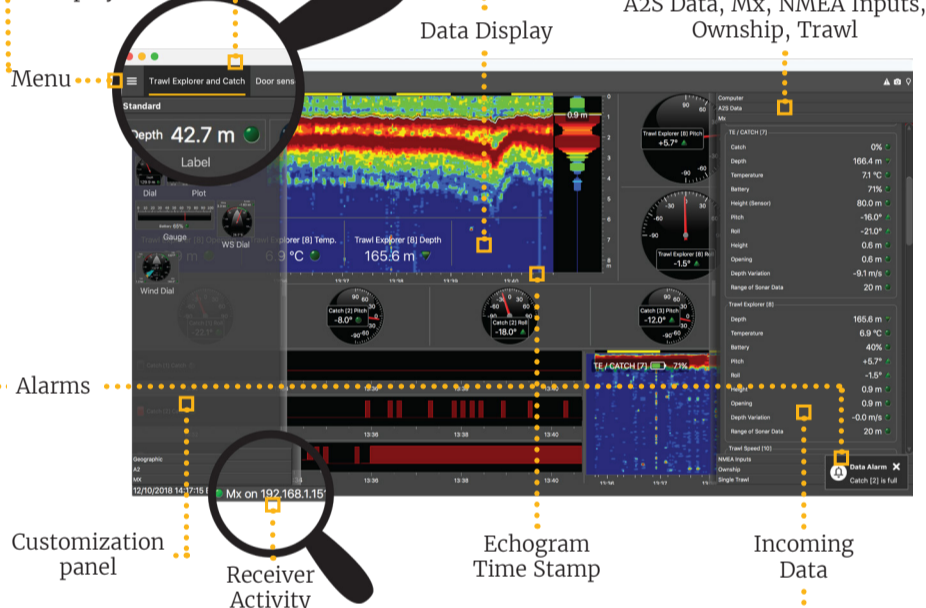
2. In the **Mx** control panel, you can see the IP address of the receiver(s), the name of the sensors (e.g. Catch, Trawl Explorer...) and data they receive (e.g. pitch, roll, depth...).
3. Click data, for example Pitch, and hold your click. After 3 sec. a rectangle with data appears. Drag it to the middle of the screen, above grey striped areas. The area becomes yellow when you can place data.
4. Stop clicking to drop data in this area.
5. From the window that appears, choose how you want to display data: dial, history plot, text...



6. Drag the lines around data to resize them.



Toolbar for Page Display



Alarms

Customization panel

Receiver Activity

Data Display

Control Panels: computer, A2S Data, Mx, NMEA Inputs, Ownship, Trawl

Mx on 192.168.10.177 Receiver is active

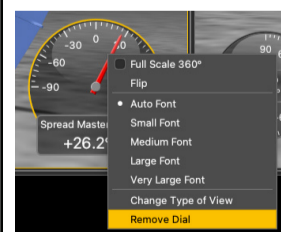
Mx on 192.168.10.177 The communication with the receiver has just been lost. There is a connection problem.

Mx on 192.168.10.177 The communication with the receiver has been lost for at least 20 seconds.

- (blinking) data are received
- Communication with the receiver has been lost for a few sec. There is a connection problem.
- There is no communication with the receiver.

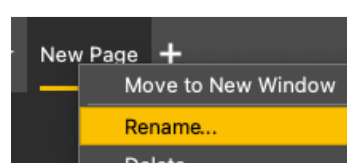
### Removing data from a page

Right-click data element and select **Remove**.



### Renaming a page

1. Right-click the page tab and select **Rename**.
2. Write a name.
3. Press **Enter**.

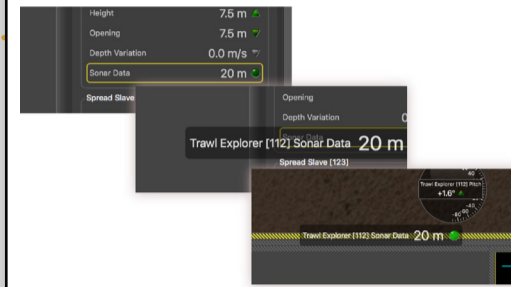


### Examples of data you can display

#### Echogram

In the **Mx** control panel, **Sonar Data** corresponds to echograms. Echograms are a representation of what is detected by the sensors with the acoustic signals. The strength of a detected target is expressed in Decibels (dB), that correspond to specific colors on the echogram. Blue usually represents the lowest target strengths and red the highest target strengths.

To add an echogram, click + drag Range of Sonar Data to a page.

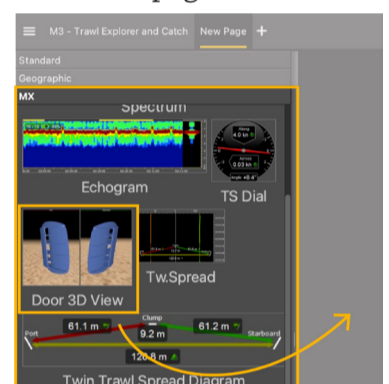


Scroll to zoom in and out of the echogram.

To change colors, right-click the echogram and select **Show Palettes**.

#### 3D view of trawl doors

Open the customization panel and go to the **Mx** tab. Click + drag the **Door 3D View** to the page.



#### Multiple history plots

You can add multiple data in one history plot in order to easily compare different data at the same time.

1. In the **Mx** control panel, click + drag data, for example Depth from a Trawl Explorer, to a page.
2. From the window that appears, select **History Plot**.
3. Drag other similar data, for example Depth from a Spread Master, to the first Depth history plot.
4. The second data appear in the history plot in another color.

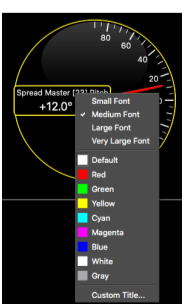


### Changing the display of page elements

You can change the title of the elements or the element itself (dial, gauge or history plot).

1. To change the title, right-click the title and choose:

- Font size
- Font color: it changes only the color of numerical data, except for history plots where it changes the line color.
- Custom title to change the default title.



2. To change the display of a dial, gauge or plot, right-click the element and choose among the different options.