


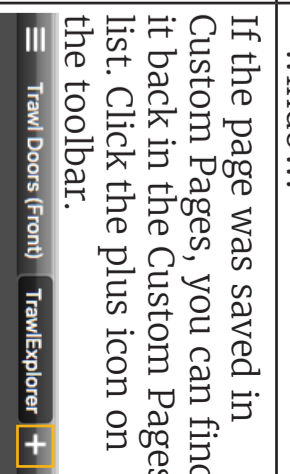
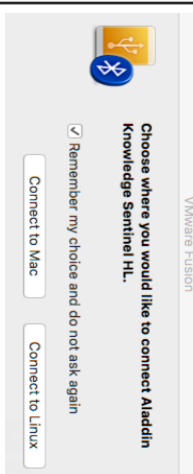





Troubleshooting

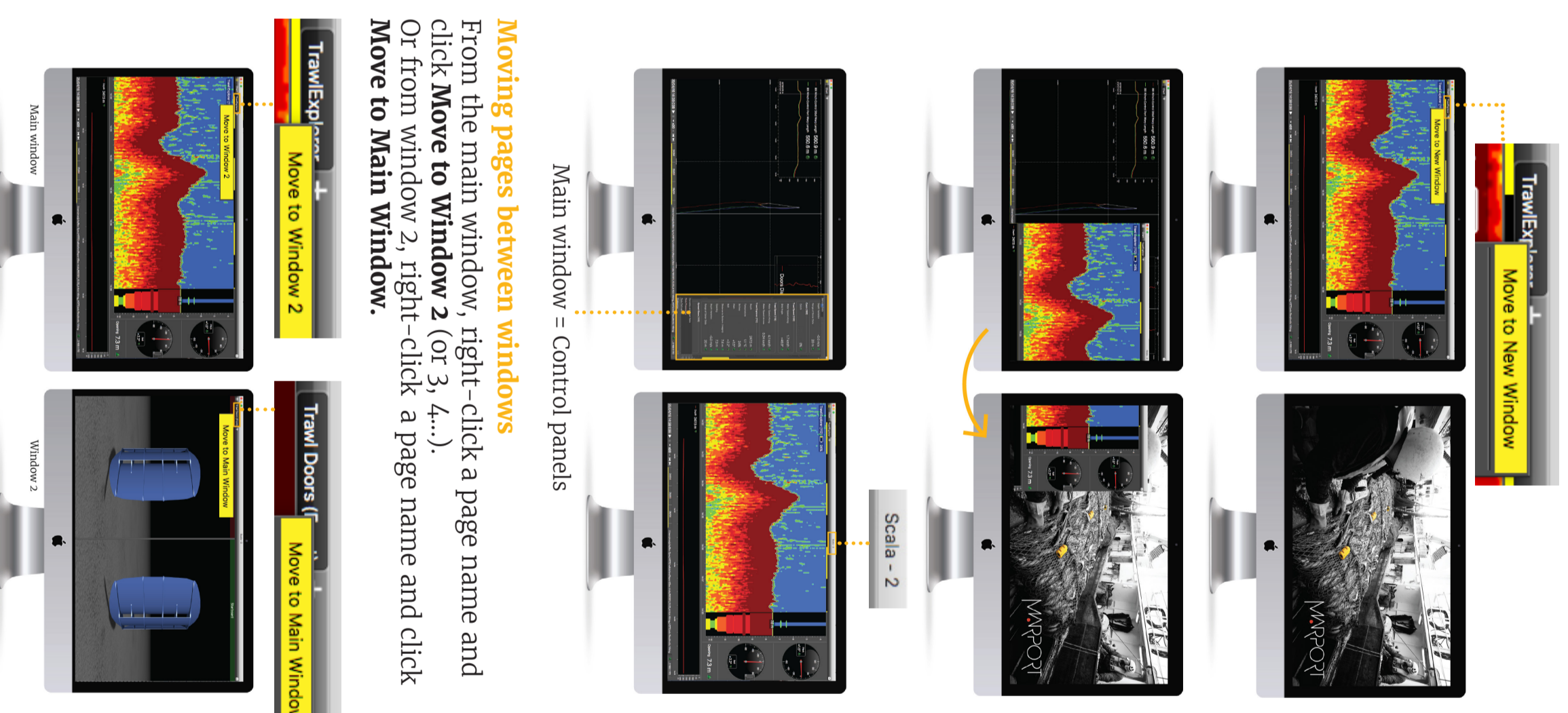
Problem	Possible causes	Solution
Sensor data are not displayed, LEDs are red or orange.	You may have closed the virtual machine that analyzes receiver data when you started Scala or when you plugged in a device.	1. Check if this icon  is in the Dock. If not, restart the system. ▲ A virtual machine starts automatically when starting the computer and is necessary for Scala functioning. The virtual machine window can appear when starting Scala. Do not close it.
I cannot find a window.	You may have closed the window.	Click Menu  > Open Window X 
I cannot see pages that were displayed before on the top toolbar.	You may have moved these pages to a new window.	1. Check the other windows to see if the page appears in it. If you created a window and cannot find it, see the previous troubleshooting case. 2. If the page is in another window, right-click the page name and select Move to Main Window to move it to the window with the control panels, or Move to Window X to move it to another window.
A VMware Fusion message appears when adding a new USB key.	This message is due to the virtual machine. It appears when adding external an USB device.	If the page was saved in Custom Pages, you can find it back in the Custom Pages list. Click the plus icon on the toolbar. 
I cannot connect to the internet.	Internet network might be too far in the network list.	1. Select Remember my choice and do not ask again. 2. Click Connect to Mac. 
I cannot connect to the internet.	Internet network might be too far in the network list.	1. From the top left corner of the screen click Apple Menu  > System Preferences > Network. 2. From the bottom of the network list, click the wheel icon and select Set Service Order.  3. Drag the network you use to have internet on top of the list. It can be for example your phone WiFi, your router WiFi, a USB to Ethernet adapter...

Windows

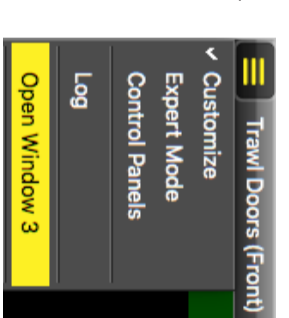
Opening a page in a new window

[Scala v.01.06.23 and after: from the top left corner of the screen, click **Menu ** > **Customize** and enter the password eureka.]

Right-click the page name, click **Move to New Window** and drag the new window to another screen.



If you closed a secondary window, you can find it back from the menu:

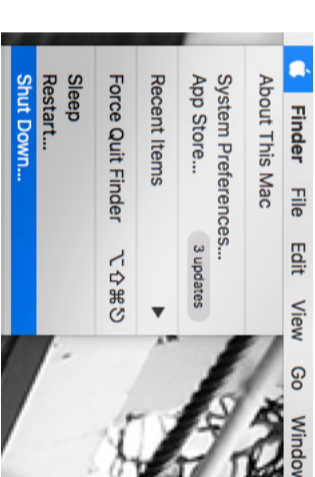


Mac Basics

Switching on:

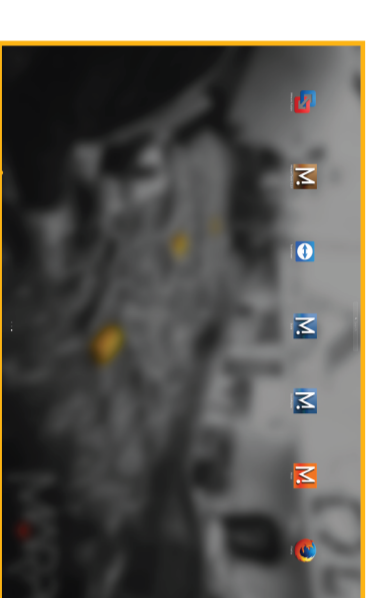


Switching off:

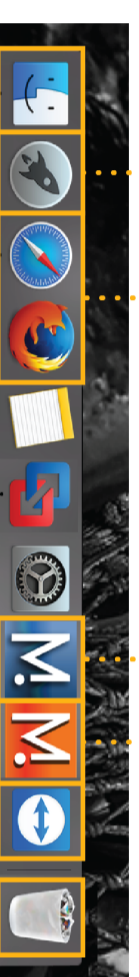


Opening applications and files via the Dock:

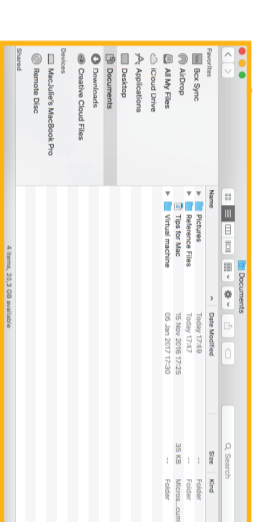
Launchpad: access all your applications



Scala Mosa



Trash: to delete item, drag it to the trash

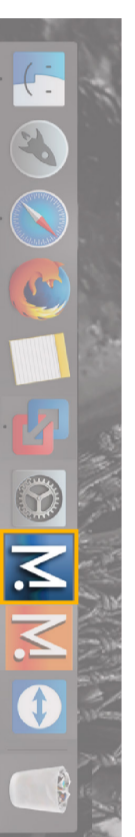


Finder: access your files

Starting Scala

- Scala software dongle must always be plugged in the computer.

From the Dock at the bottom of the screen, click Scala icon.

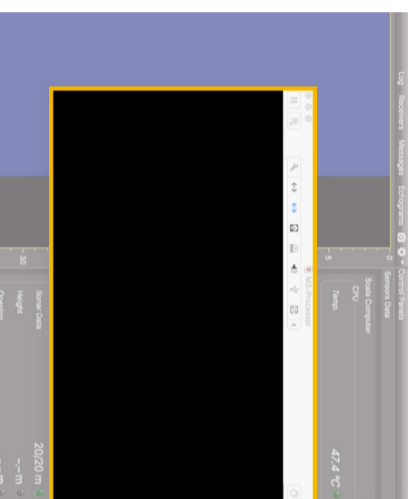


▲ The following window is a software that analyzes sensors data. This program is necessary for the functioning of the receiver.

DO NOT CLOSE this window. If it appears, click minimize  to hide it. This icon should always appear at the bottom of your desktop screen:



If you close the window, restart the system.



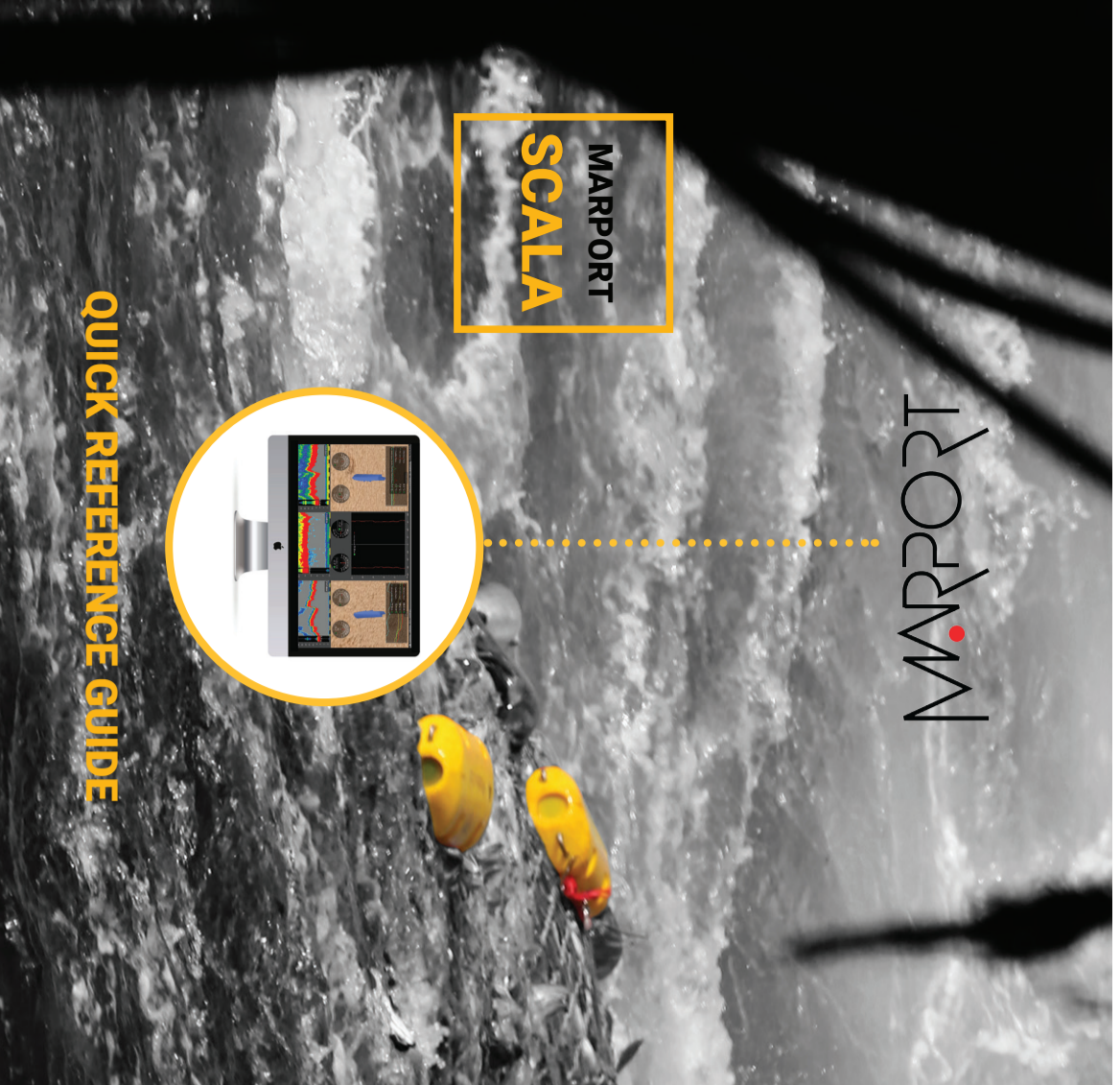
USA
Marport Americas Inc. USA
12123 Harbour Reach Drive
Mukilteo, WA 98275 USA
supportusa@marport.com

Spain
Marport Spain SRL
Camino Chouzo 1
36208 Vigo (Pontevedra)
Spain
supportspain@marport.com

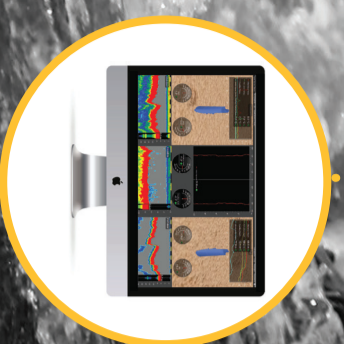
France
Marport France SAS
8, rue Maurice Le Léon
56100 Lorient, France
supportfrance@marport.com

Iceland
Marport EHF
Fossaleyni 16
112 Reykjavík, Iceland
supporticeland@marport.com

Offices



QUICK REFERENCE GUIDE



Scala collects, processes, stores and displays data sent from multiple sensors, sounders and other connected devices.

In order to suit the working conditions, gear and sensor data type available, this monitoring system offers unparalleled flexibility.

It is easily configurable:

- Display up to four simultaneous echogram presentations on a single page.
- Use drag and drop possibilities to customize your page layout.
- Choose from existing gauges, history plots or 3D views or create your own layout with any number of sensors displayable on screen.
- Adjust windows and graphs according to your needs.
- Compare data from equivalent sensors using multiple history plots.
- Easily play back recorded data.

i This guide is an introduction to Scala. If you want to learn more about configuration and advanced customization of display, see Scala User Guide.

No part of this document may be reproduced, stored in a retrieval system or transmitted in any form by any means, electronic, mechanical, photocopying or otherwise, without the express written permission from Marport. "Marport", the Marport logo and Software Defined Sonar are registered trademarks of Marport. All other brands, products and company names mentioned are the trademark and property of its respective owners only. Marport is a division of Airmar Technology Corporation.

© 2016-2017 Marport. All Rights reserved

Data received from sensors are displayed on pages. Pages are organized in tabs on the top toolbar.



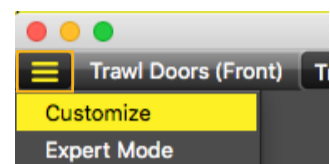
Click one tab to display the corresponding page.

On the top of the echogram, you can see:

- Name of the sensor, followed by a number corresponding to its location on the trawl (see Scala user guide for more details).
- Battery level of the sensor
- Target Strength if using V3 Explorer sensors (helps you differentiate species and sizes of fish).

HDTE [9] 60% -36.0 dB

To edit pages, first click the menu, then **Customize**. Enter the password **eureka**.

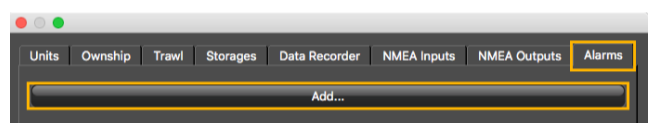


When you have finished customizing pages, you need to deactivate the Customize mode: click **Menu** > **Customize** again.

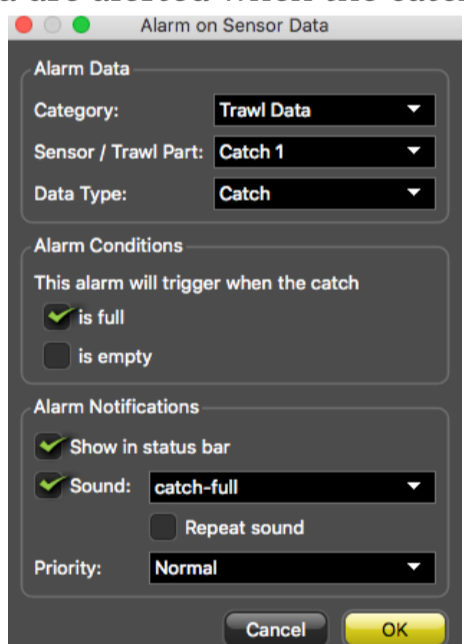
Setting an Alarm

You can be alerted by an alarm when data received have a given value.

1. Click **Menu** > **Settings**
2. Select the tab **Alarms**.
3. Click **Add**.



4. In **Alarm Data**, choose on which category of equipment, part and data type you want to set the alarm.
5. In **Alarm Conditions**, choose the conditions on which the alarm is triggered.
6. In **Alarm Notifications**, choose if you want to display a visual notification in the status bar (like in the big Scala picture) and a sound.
7. For example, with these parameters you are alerted when the catch is full:

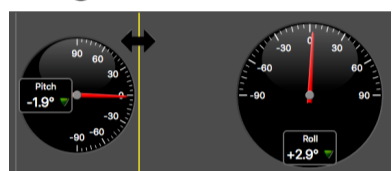


Adding data to a page

1. Open the control panels: click the small rectangle at the right side of the screen.
2. From Sensors Data, you can see the name of the sensors (e.g. Catch, Trawl Explorer, Spread Master...) and data they receive (e.g. pitch, roll, depth...).
3. Click data, for example Pitch, and hold your click. After 3 sec. a rectangle with data appears. Drag it to the middle of the screen, above grey striped areas. The area becomes yellow when you can place data.
4. Stop clicking to drop data in this area.



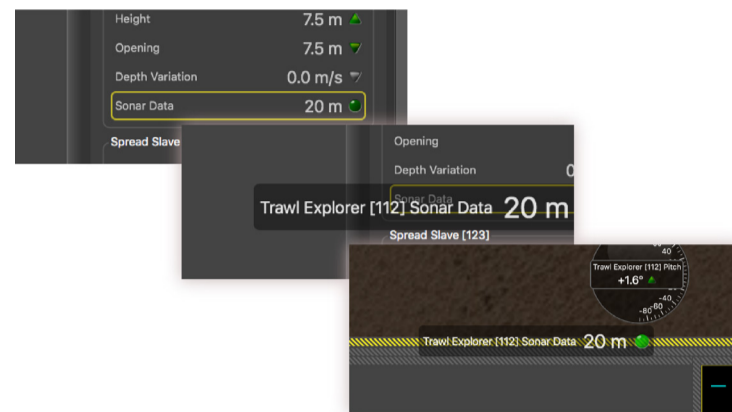
5. From the window that appears, choose how you want to display data: dial, history plot, text...
6. Drag the lines around data to resize them.



Examples of data you can display

Echogram

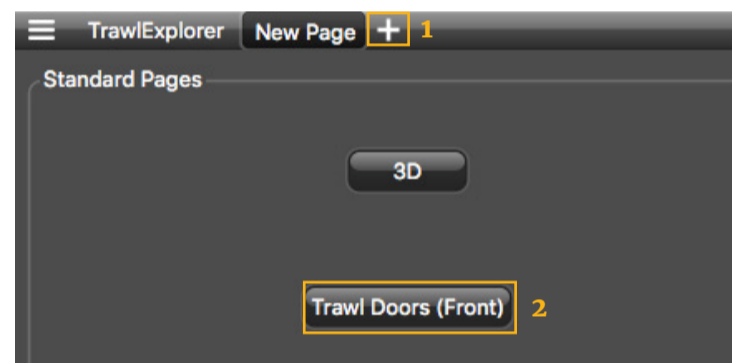
In the part Sensors Data of the control panels, **Sonar Data** correspond to echograms. Echograms are a representation of what is detected by the sensors with the acoustic signals. The strength of a detected target is expressed in Decibels (dB), that correspond to specific colors on the echogram. Blue usually represents the lowest target strengths and red the highest target strengths. To add an echogram, click + drag Sonar Data to a page.



Scroll to zoom in and out of the echogram. To change colors, right-click the echogram and select **Show Palettes**.

3D view of trawl doors

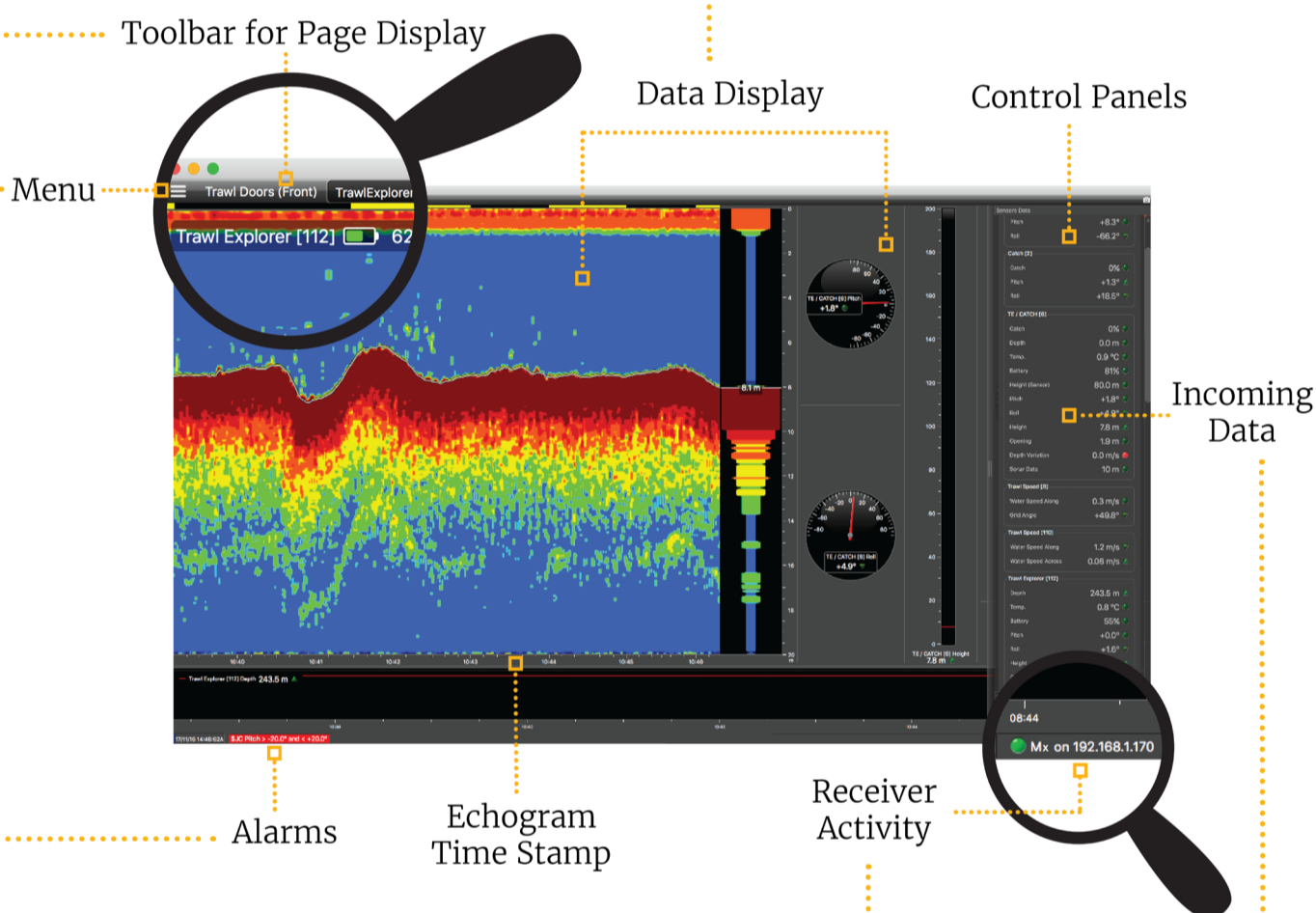
If you have sensors placed on your trawl doors, you can display a 3D view of the doors to see their movements. To create a new page with the view of the doors:



Multiple history plots

You can add multiple data in one history plot in order to easily compare different data at the same time.

1. From Sensors Data in the control panel, click + drag data, for example Depth from a Trawl Explorer, to a page.
2. From the window that appears, select History Plot.
3. Drag other similar data, for example Depth from a Spread Master, to the first Depth history plot.
4. The second data appear in the history plot in another color.



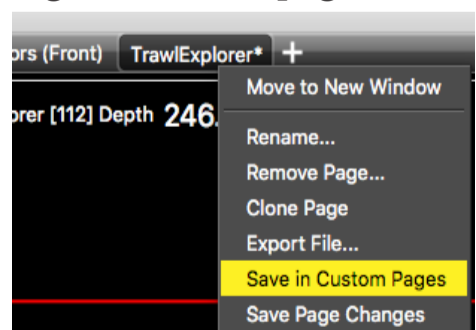
- Mx on 192.168.10.177 Receiver is detected
- Mx on 192.168.10.177 Receiver is active
- Mx on 192.168.10.177 The communication with the receiver has just been lost. There is a connection problem.
- Mx on 192.168.10.177 The communication with the receiver has been lost for at least 20 seconds.

- (blinking) data are received
- Communication with the receiver has been lost for a few sec. There is a connection problem.
- There is no communication with the receiver.

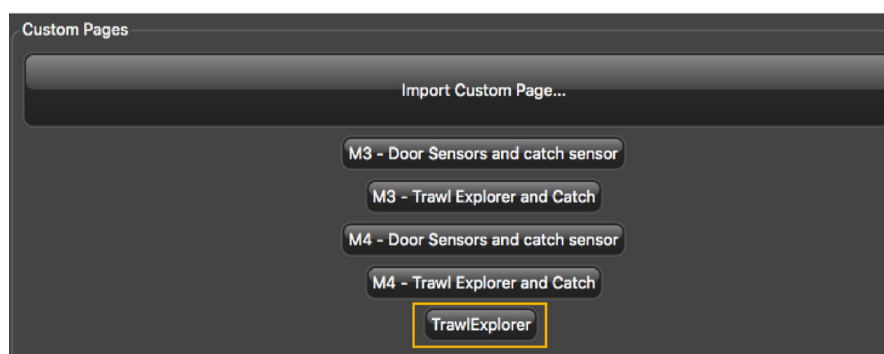
Saving a page

If you made changes to a page, you need to save them.

1. Right-click the page tab and select **Save in Custom Pages**.



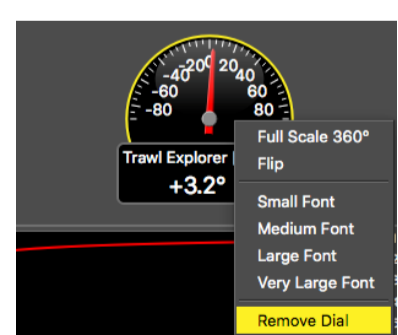
2. From the **Save page template as** dialog box, click **Save**.
3. The page is added to the Custom Pages. To see them, click the icon + on the top toolbar.



4. Right-click the page tab again and select **Save Page Changes**.

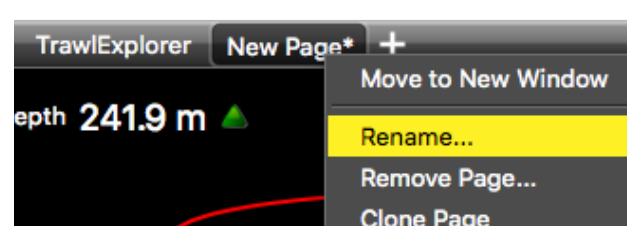
Removing data from a page

Right-click data element and select **Remove**.



Renaming a page

1. Right-click the page tab and select **Rename**.
2. Write a name.
3. Press **Enter**.

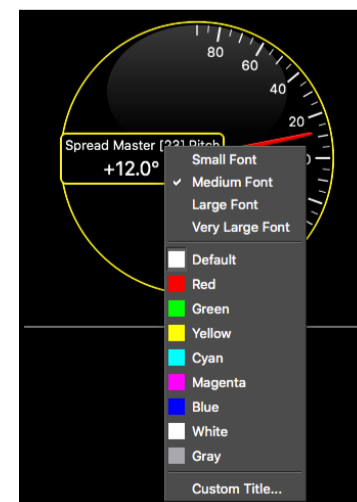


Changing the display of page elements

You can change the title of the elements or the element itself (dial, gauge or history plot).

1. To change the title, right-click the title and choose:

- Font size
- Font color: it changes only the color of numerical data, except for history plots where it changes the line color.
- Custom title to change the default title.



2. To change the display of a dial, gauge or plot, right-click the element and choose among the different options.